

HEAT technology sheet



Why choosing HEAT makes sense

Starting your field off right is critical to success. HEAT™ herbicide, tank-mixed with glyphosate, ensures you start with the cleanest field possible every time. HEAT is a new unique class of chemistry that dramatically improves your glyphosate control, giving you the fastest, sharpest and most sustainable control of the toughest broadleaf weeds.

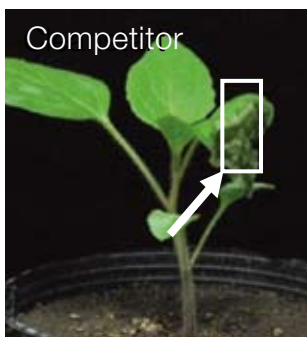
HEAT delivers:

- Fast, complete control of all broadleaf weeds
- Consistent control of weeds up to the 8-leaf stage
- Weed-resistance management.

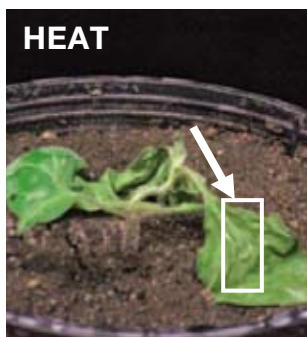
How HEAT works

HEAT contains the active ingredient KIXOR®, a new, innovative chemistry (pyrimidinedione) with contact and systemic properties. What makes HEAT unique is its mobility within the plant that complements glyphosate, providing superior control of large, tough-to-control broadleaf weeds. A droplet of HEAT was placed in the second leaf of a broadleaf weed and the results shown below were obtained after 24 hrs. HEAT was distributed throughout the plant, and the end result was complete plant death, rather than just localized tissue death.

24 hrs. after treatment



Contact action



Contact + systemic action

Because HEAT also controls glyphosate-resistant and Group 2-resistant weeds, it's an important part of a resistance-management plan for sustainability in reduced tillage operations. HEAT, tank-mixed with glyphosate, can be applied to fields before a cereal or pulse crop.

Which crops benefit from HEAT

HEAT can be applied either pre-seed or pre-emergence (prior to ground break).

Cereals	Barley	Tame oats
	Canary seed	Wheat (spring, winter and durum)
	Corn	
Pulses	Chickpeas	Lentils
	Field peas	Soybeans
Chem-fallow		

What HEAT controls

HEAT works fast on broadleaf weeds. In addition to all the broadleaf weeds on the glyphosate label, the following list shows those weeds over which HEAT provides significantly better control than glyphosate alone.

Weeds controlled up to the 8-leaf stage

Canada fleabane*	Narrow-leaf hawk's beard****	Stinkweed
Dandelions**	Redroot pigweed	Volunteer Roundup Ready canola
Flixweed	Round-leaf mallow	Wild buckwheat
Kochia*(up to 15 cm)	Spring & winter annual cleavers***	Wild mustard*
Lamb's-quarters		

* Includes glyphosate-resistant and Group 2-resistant biotypes.

** Rapid Control of spring emerged seedlings, and rapid top growth control of perennials (<15 cm) when combined with glyphosate.

*** Rapid control of (<4 whorl) when combined with glyphosate.

**** Rapid control of (<8 cm) when combined with glyphosate.

Refer to the glyphosate label for a full description of the weeds controlled.

HEAT™

POWERED BY **KIXOR®** HERBICIDE

HEAT provides fast knockdown

HEAT provides control of broadleaf weeds in as few as 4 days.



Dandelion



Narrow-leaved hawk's-beard



Volunteer Roundup Ready canola



Group 2-resistant kochia



Wild buckwheat



Always read and follow label directions.

AgSolutions, MERGE and KIXOR are registered trade-marks and HEAT and the unique KIXOR X symbol are trade-marks of BASF. All other products are trade-marks or registered trade-marks of their respective companies. © 2010 BASF Canada Inc.

When to apply HEAT

HEAT provides flexibility and can be applied pre-seed or pre-emerge (before or after seeding, prior to ground crack). Do not apply HEAT if ground break has occurred. HEAT can be applied when broadleaf weeds are at or between the cotyledon and 8-leaf stages.

How much to apply

- HEAT is intended to be tank-mixed with glyphosate. HEAT is compatible with all formulations and rates of glyphosate.
- 1 case of HEAT treats 640 acres.
- 8 jugs/case; 1 jug treats 80 acres.
- An adjuvant is required when using HEAT and glyphosate:
 - Add MERGE® or AMIGO at a rate of 0.5 L/ha, or Score at a rate of 1 L/ha.
- Apply HEAT in a water volume of 50–100 L/ha (5–10 gal./ac).

Application tips

To optimize the broadleaf activity when applying HEAT, follow these guidelines:

- Always add in an adjuvant (MERGE or AMIGO).
- Use a minimum water volume of 5 gal./ac to maximize coverage.
- If weeds are large or densities are high, use a minimum water volume of 10 gal./ac.
- HEAT is extremely rainfast. The rainfast period will be limited by the type of glyphosate used. Follow the glyphosate manufacturer's recommendation for rainfast guidelines.

For more information about HEAT, contact **AgSolutions®** by BASF at 1-877-371-BASF (2273).

HEAT™ 
POWERED BY **KIXOR®** HERBICIDE